

MONA VALE



The property is located on Bungan Street, in the heart of Monavale's highly sought after commercial/retail precinct.

Quality first floor office space overlooking Bungan Street in modern commercial/retail building.

Benefits include:

- * Prominent street front signage
- * Above retail shop offering great street exposure
- * Excellent natural light
- * Own kitchenette
- * Shared M&F toilets
- * On-street parking
- * Includes small storeroom
- * Available now

Suite	Area m ²	Annual Rental	Net/Gross
Suite 1	41		Gross

Prices exclude GST

Rent Review: Annual to the greater of CPI or 4%. Market at option.

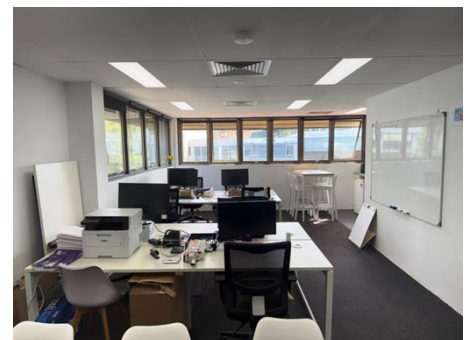
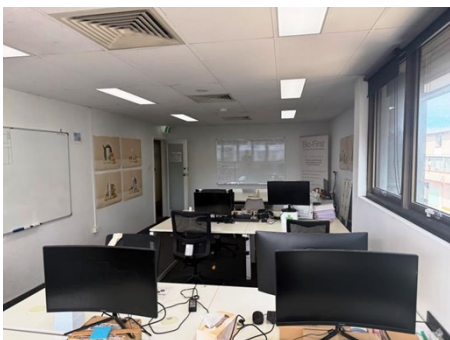
Outgoings: Included in annual rent

Lease Terms: Long term preferred

Car Parking: On-street

Zoning: B4 Mixed Use

For further details contact **The Team** on **0417 657757** or sonya@nbcommercial.com.au



The information contained herein has been supplied to us. In passing the information on it should be noted that we do so without any representation on our part as to its truth or accuracy. All interested parties should make their own enquiries, and obtain their own independent advice, in order to verify the information. Areas subject to survey and consequently annual rentals may differ. All rentals and outgoings are exclusive of GST.

Locally Owned & Operated

Suite 110, 658 Pittwater Road Brookvale NSW 2100

T 02 9905 4000 F 02 9905 4211

www.northernbeachescommercial.com.au

ABN 17 141 877 465