

COLLARROY



The property is located in a prestige development on the eastern side of Pittwater Road, Collarroy.

Modern retail shop/office with great exposure and the following features:

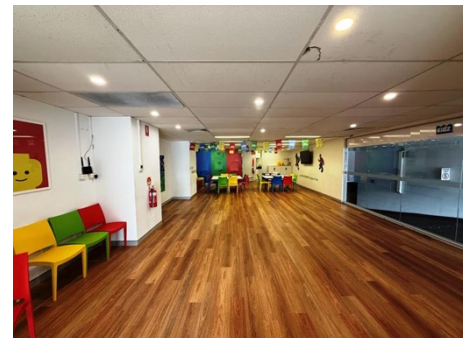
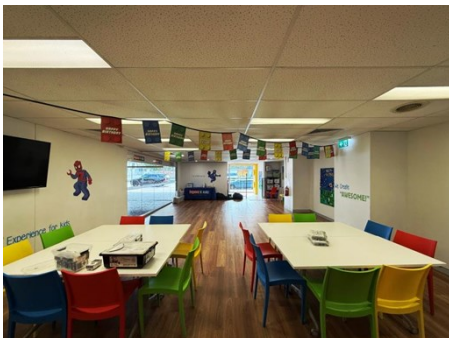
- * Prime exposure to Pittwater Rd
- * Excellent presentation
- * Impressive internal fitout
- * Toilet and kitchenette
- * Ample visitor parking
- * Ducted air conditioning
- * Full height glass frontage
- * Suitable for any retail or professional office user

Retail	Area m ²	Annual Rental	Net/Gross
Shop 4	101		Gross

Prices exclude GST

- Rent Review:** Annual to the greater of CPI or 4% Market at option.
- Outgoings:** Included in annual rent
- Lease Terms:** Long term preferred
- Car Parking:** On-site
- Zoning:** B1 Neighbourhood Centre

For further details contact **Nick Masselos** on **0419 993 978** or **nick@nbcommercial.com.au**



The information contained herein has been supplied to us. In passing the information on it should be noted that we do so without any representation on our part as to its truth or accuracy. All interested parties should make their own enquiries, and obtain their own independent advice, in order to verify the information. Areas subject to survey and consequently annual rentals may differ. All rentals and outgoings are exclusive of GST.

Locally Owned & Operated

Suite 110, 658 Pittwater Road Brookvale NSW 2100

T 02 9905 4000 F 02 9905 4211

www.northernbeachescommercial.com.au

ABN 17 141 877 465