

MANLY VALE



The property is located in Manly Grove a very popular estate in Campbell Parade, Manly Vale. It is accessed via Condamine Street giving easy access to the Burnt Bridge by-pass to Mosman and the city.

Excellent industrial unit in a great location in "B" Block, near the entrance to the estate.

Benefits include:

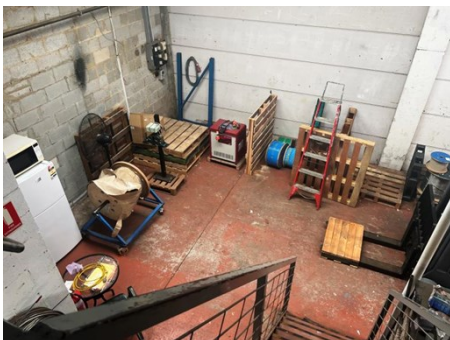
- * Mezzanine office 20m²
- * 3 phase power
- * Storage mezzanine 13m²
- * W/C and kitchenette
- * 2 parking spaces
- * Available late November, 2024

Unit	Warehouse m ²	Office m ²	Other m ²	Total m ²	Rent PA	Net/Gross
Unit B4	108	20	13	141	\$34,000	Gross

Prices exclude GST

- Car Parking:** 2 parking spaces
- Zoning:** E4 - General Industrial
- Outgoings:** Included in annual rent
- Rent Review:** Annual to the greater of CPI or 4% Market at option.
- Lease Terms:** Long term preferred / short term considered

For further details contact **David Haynes** on **0417 242 043** or david@nbcommercial.com.au



The information contained herein has been supplied to us. In passing the information on it should be noted that we do so without any representation on our part as to its truth or accuracy. All interested parties should make their own enquiries, and obtain their own independent advice, in order to verify the information. Areas subject to survey and consequently annual rentals may differ. All rentals and outgoing are exclusive of GST.

Locally Owned & Operated

Suite 110, 658 Pittwater Road Brookvale NSW 2100

T 02 9905 4000 F 02 9905 4211

www.northernbeachescommercial.com.au

ABN 17 141 877 465