

FRENCHS FOREST



The property is a well presented office, located in Rodborough Road, Frenchs Forest.

The office is located in a modern building with the following features:

- * Well presented office
- * M & F amenities
- * Own kitchenette
- * 5 parking spaces
- * 5 partitioned offices plus meeting room
- * Extensive central open plan work area
- * Ducted air conditioning
- * Suitable for a wide rang of business types

The property is close proximity to the Wakehurst Parkway & Warringah Road giving easy access to the City, Chatswood and Northern Beaches while also being close to the new hospital.

Suite	Area m ²	Annual Rental	Net/Gross
Unit 9 - Ground floor office	250	\$49,000	Gross

Prices exclude GST

Rent Review: Annual to the greater of CPI or 4%. Market at option.

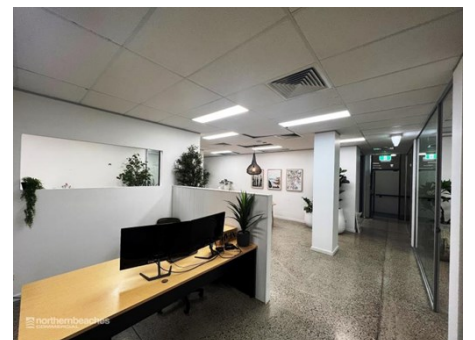
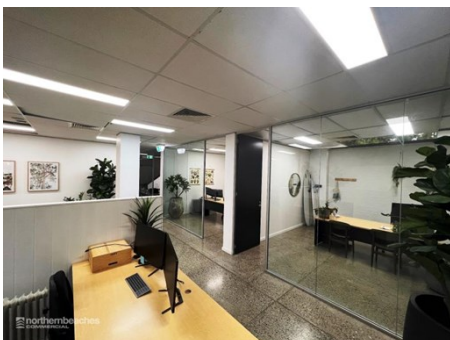
Outgoings: Included in annual rent

Lease Terms: Long term preferred

Car Parking: 5 parking spaces

Zoning: B7 Business Park

For further details contact **Nick Masselos** on **0419 993 978** or **nick@nbcommercial.com.au**



The information contained herein has been supplied to us. In passing the information on it should be noted that we do so without any representation on our part as to its truth or accuracy. All interested parties should make their own enquiries, and obtain their own independent advice, in order to verify the information. Areas subject to survey and consequently annual rentals may differ. All rentals and outgoings are exclusive of GST.

Locally Owned & Operated

Suite 110, 658 Pittwater Road Brookvale NSW 2100

T 02 9905 4000 F 02 9905 4211

www.northernbeachescommercial.com.au

ABN 17 141 877 465