

## FRENCHS FOREST



Forest Central Business Park is a modern commercial development strategically located in Frenchs Forest, on the Northern side of Warringah Road. The property has easy access to Warringah Road and Wakehurst Parkway within close proximity to the new Northern Beaches Hospital.

Benefits include:

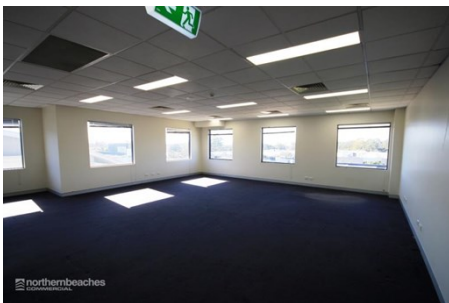
- \* High quality office suite
- \* Lift access
- \* Great natural light
- \* Corner position
- \* Cafe located within the development
- \* 2 Parking spaces
- \* Suitable for a wide range of business types

Suite	Area m <sup>2</sup>	Annual Rental	Net/Gross
Unit 18 Building 7	69	\$25,000	Gross

Prices exclude GST

- Rent Review:** Annual to the greater of CPI or 3%. Market at option.
- Outgoings:** Included in annual rent.
- Lease Terms:** Long term preferred
- Car Parking:** 2 parking spaces
- Zoning:** B7 Business Park

For further details contact **Nick Masselos** on **0419 993 978** or **nick@nbcommercial.com.au**



The information contained herein has been supplied to us. In passing the information on it should be noted that we do so without any representation on our part as to its truth or accuracy. All interested parties should make their own enquiries, and obtain their own independent advice, in order to verify the information. Areas subject to survey and consequently annual rentals may differ. All rentals and outgoings are exclusive of GST.

### Locally Owned & Operated

Suite 110, 658 Pittwater Road Brookvale NSW 2100  
 T 02 9905 4000 F 02 9905 4211  
[www.northernbeachescommercial.com.au](http://www.northernbeachescommercial.com.au)  
 ABN 17 141 877 465